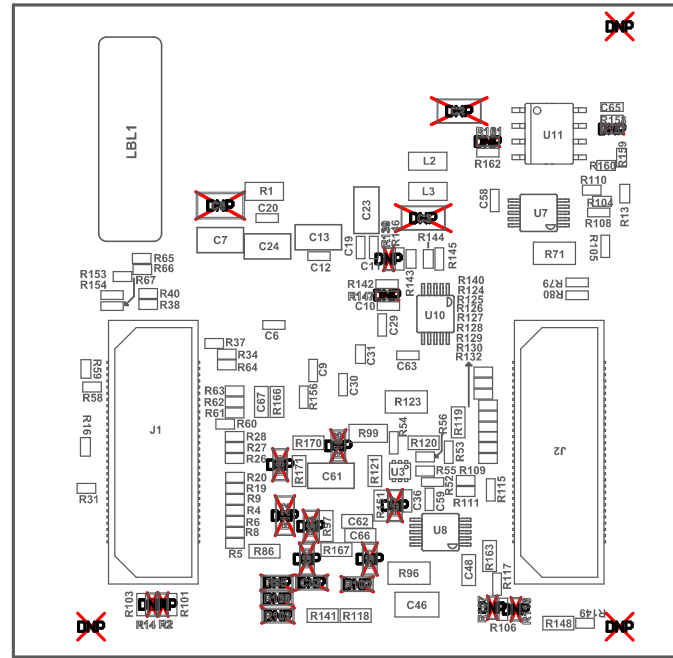


- Z21 ■ Install label in silkscreened box after final wash. Text shall be 8 pt font. Text shall be per the Label Table in the PDF schematic.
 Z22 ■ These assemblies are ESD sensitive, ESD precautions shall be observed.
 Z23 ■ These assemblies must be clean and free from flux and all contaminants. Use of no clean flux is not acceptable.
 Z24 ■ These assemblies must comply with workmanship standards IPC-A-610 Class 2, unless otherwise specified.

COMPONENTS MARKED 'DNP' SHOULD NOT BE POPULATED.
 ASSEMBLY VARIANT: 001

PCB VIEWED FROM TOP SIDE	BOARD #: PROC075	REV: A	SUN REV: Not In VersionControl
Assembly Layer Top	TID #: N/A		
PLOT NAME = Top Assembly Drawing	GENERATED : 1/10/2019	4:00:47 PM	TEXAS INSTRUMENTS



COMPONENTS MARKED 'DNP' SHOULD NOT BE POPULATED.
 ASSEMBLY VARIANT: 001

PCB VIEWED FROM BOTTOM SIDE	BOARD #: PROC075	REV: A	SUN REV: Not In VersionControl
Assembly Bottom Layer	TID #: N/A		
PLOT NAME = Bottom Assembly Drawing	GENERATED : 1/10/2019	4:00:47 PM	TEXAS INSTRUMENTS